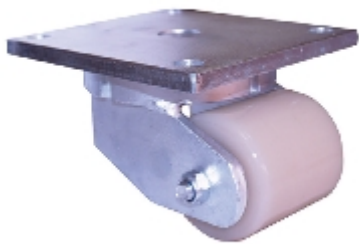






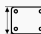

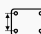

Swivel castor:

505a 0SK085p ZPS

On request



Technical data

Diameter		85 mm
Tread width		85 mm
Height		125 mm
Offset		57 mm
Top plate dimensions		190x170 mm
Top plate hole diameter		16,5 mm
Dist. between holes		150x135 mm
Load capacity		1200 kg

Technical description

heavy steel welded construction with special turntable

zinc passivated

pressed ball track above, with tapered roller bearing below

grease filling and grease nipple in fork head