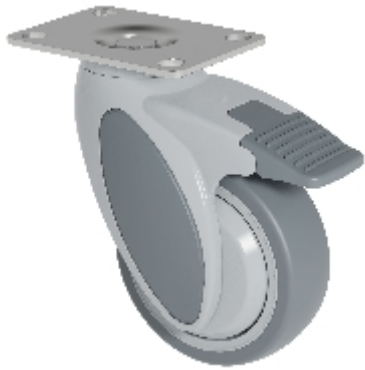




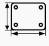
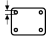
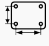




Swivel castor with total brake mounted behind:

## KSF2-41C-P95 (VIVAX 2.0)



### Technical data

Diameter		100 mm
Wheel width		32 mm
Height		142,5 mm
Offset		46 mm
Top plate dimensions		95x70 mm
Top plate hole diameter		8,5 mm
Dist. between holes		75x50/72x52 mm
Load capacity		100 kg
Weight		600 g

### Technical description

plastic castor

fork made of high-strength impact-resistant nylon

swivel fork head with sealed deep groove ball bearing



### Wheel

TPE tread (Shore A 87)

polypropylene wheel body

thread guard

ball bearing

non-oiling

on request further variants available