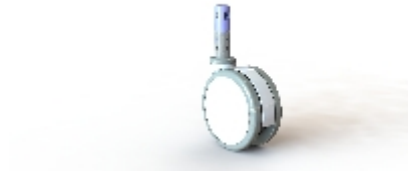



Swivel castor with central/directional total brake:

306007001M (03651340400300010805)



Technical data

Diameter		150 mm
Tread width		18 mm
Height		164 mm
Offset		51 mm
Stem size		28x98 M8 19 mm
Load capacity		150 kg

Wheel

Plastic wheel centre and hub guard matt white
RAL9003

Precision ball bearing

90° Shore A

Polyurethane tyre Grey RAL7005

Grey Top cap