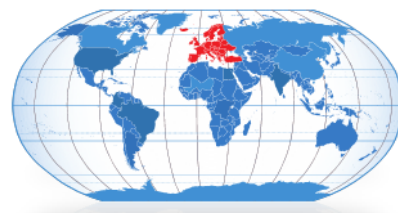


Product Information



SJE 200 NT2D H05 BX6 - 0640-0451

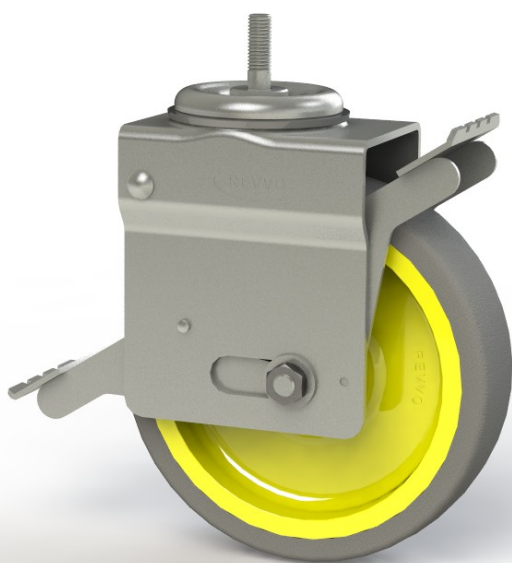
SJE Series Zero offset Scaffold Castor

Pressed Steel Zinc Plated Fork

Swivel race is a double ball raceway comprising 5/16" and 1/4" ball bearings.

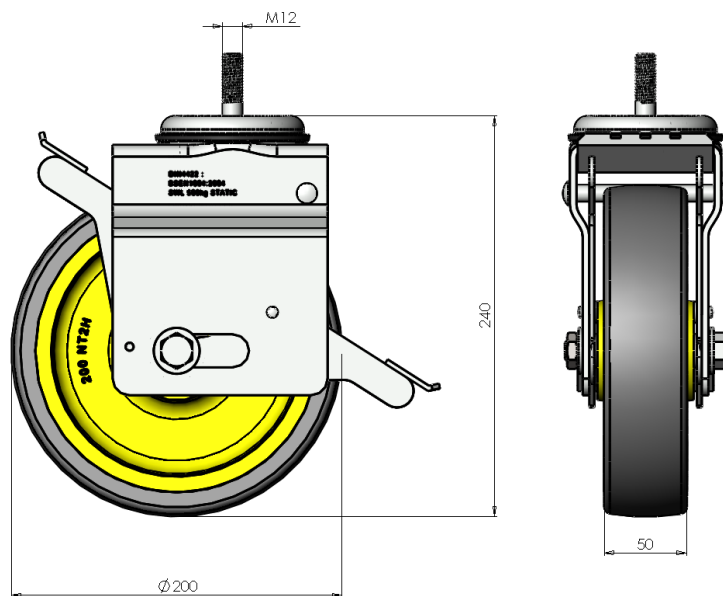
Nylon wheel centre with a TPU tyre and ball journal bearing.

M12 fixing bolt



Technical Data

Wheel diameter	200mm
Wheel tread width	50mm
Hub width	60mm
Swivel radius	165mm
Offset in braked position	0mm
Offset in free position	33.5mm
Body - colour	Zinc Plated
Wheel — colour	Yellow
Tyre - colour	Mid Grey
Load capacity (static)	820Kg
Standards	BS EN 1004 : 2004



THE GLOBAL LEADER IN CASTORS AND WHEELS

Printed copies are uncontrolled, please refer to website for latest information www.colson-castors.co.uk

20/04/2015 Issue 1