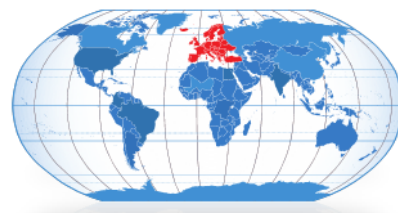


Product Information



245005007

42 5533 402 032 5001 0805

PlasTECH Solus – “Lo-Hite” castor

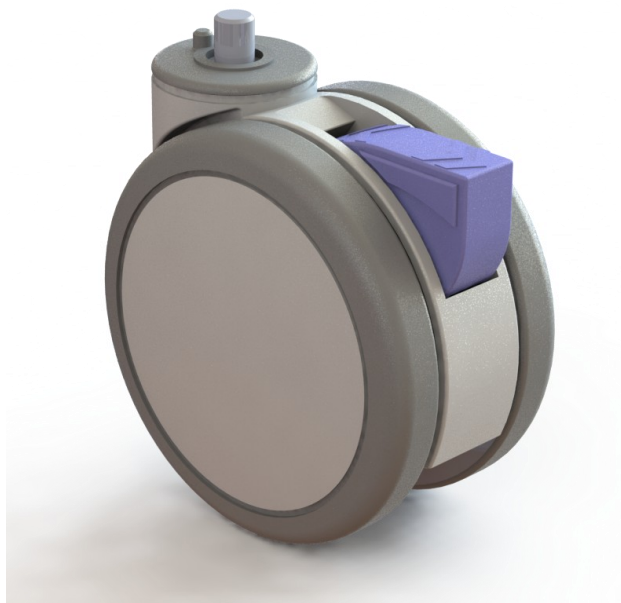
Twin wheel Directional Lock castor

Nylon Body with roller bearing for swivel

M12 x 15 stem with hexagon mount height

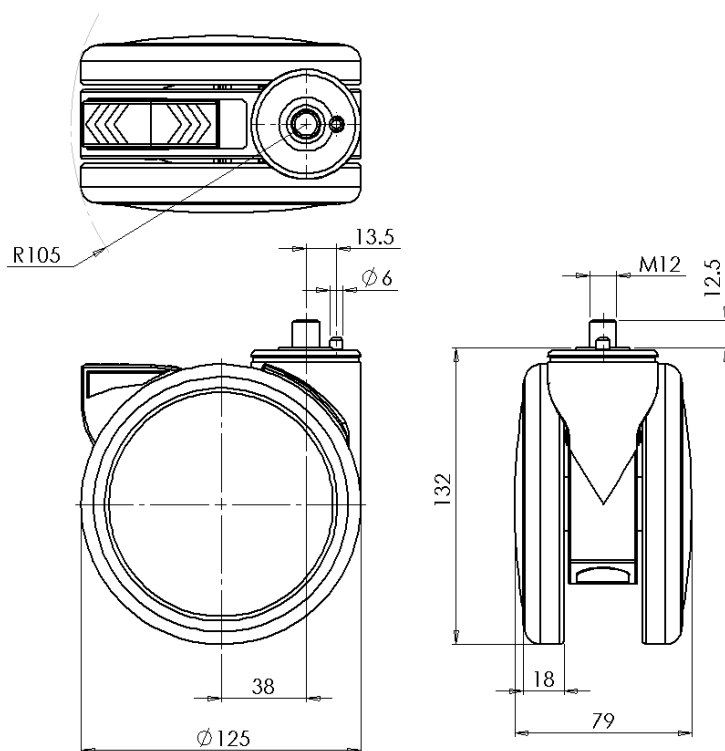
Low rolling friction and force to initiate motion

Wheel centre Nylon, Tread Polyurethane, precision ball bearing



Technical Data

Wheel diameter	125mm
Wheel tread width	18mm
Tread hardness	90° Shore A
Tread Colour	Grey
Castor width	79mm
Swivel radius	105mm
Offset	38mm
Body & wheel cover - colour	RAL 9003
Load capacity (dynamic)	100Kg
Standard	ISO 22882



THE GLOBAL LEADER IN CASTORS AND WHEELS

Printed copies are uncontrolled, please refer to website for latest information www.colson-castors.co.uk

20/04/2015 Issue 1