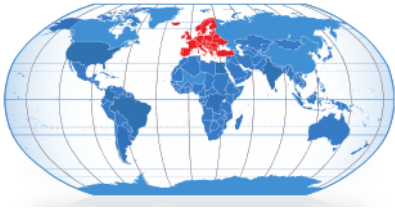


# Product Information

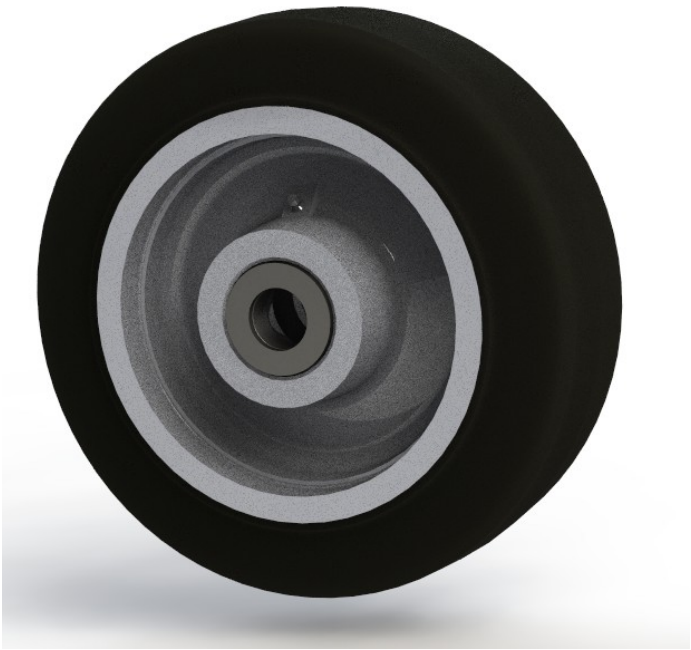


**WRT-312TM40**

## WRT/TM Series 12" (300mm) Wheel

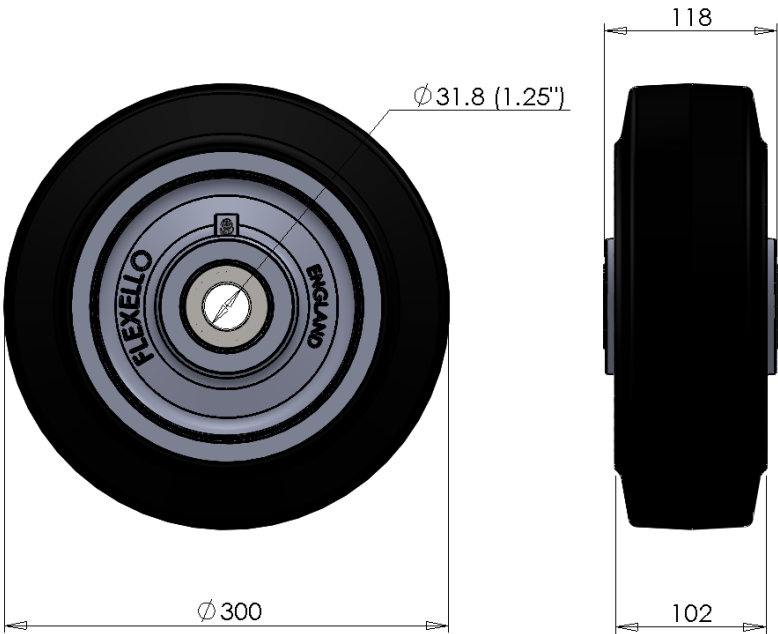
Rubber Tyred - Cast Iron Wheel.

Fitted with a Tapered Roller Bearing



### Technical Data

Wheel diameter	300mm (12")
Wheel width	102mm
Hub width	118mm
Bore diameter	31.8mm (1.25")
Wheel — colour	Grey
Tyre—colour	Black
Load capacity (dynamic)	1800Kg



**THE GLOBAL LEADER IN CASTORS AND WHEELS**

Printed copies are uncontrolled, please refer to website for latest information [www.colson-castors.co.uk](http://www.colson-castors.co.uk)

20/04/2015 Issue 1