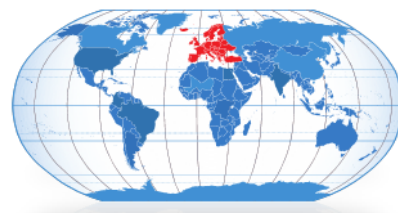


Product Information



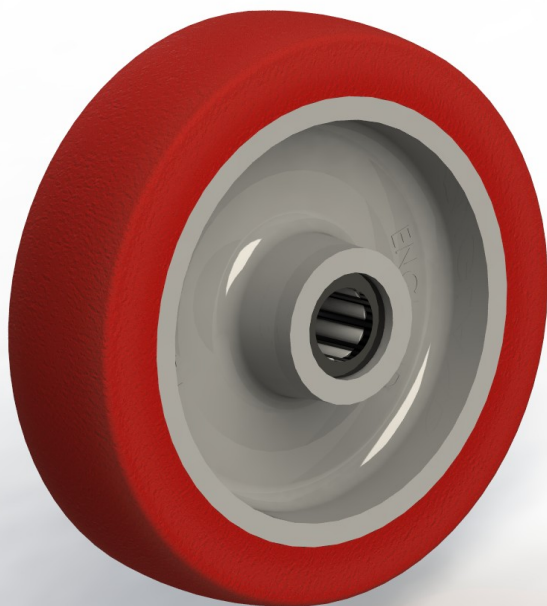
WPN5RBM15

5" (125mm) Wheel

Nylon Wheel Centre

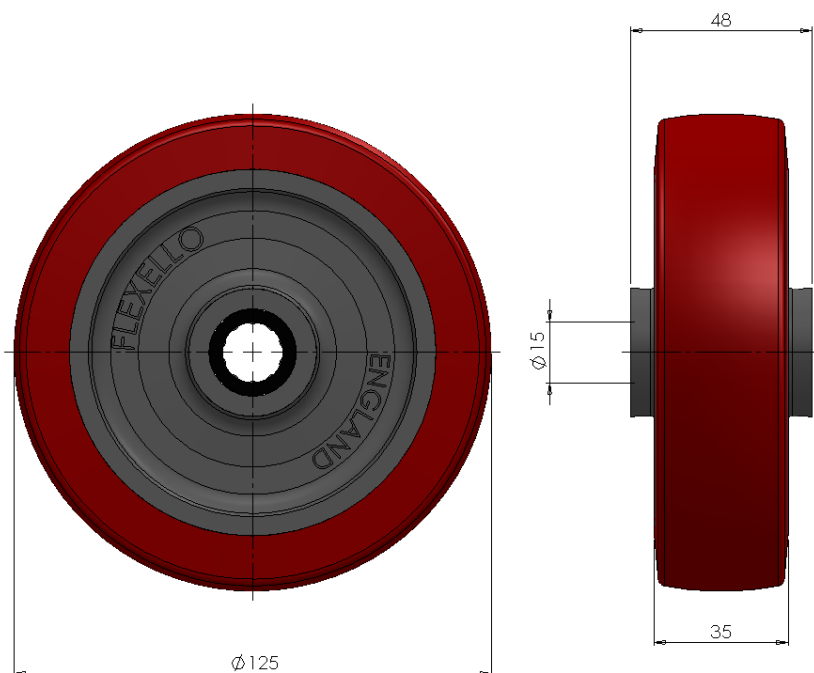
Polyurethane tyre

Fitted with Roller Bearing



Technical Data

Wheel diameter	125mm
Wheel tread width	35mm
Hub width	48mm
Bore diameter	15mm
Swivel radius	N/A
Offset	N/A
Body - colour	N/A
Wheel — colour	Grey
Tyre—colour	Red
Load capacity (dynamic)	270Kg
Standard	N/A



THE GLOBAL LEADER IN CASTORS AND WHEELS

Printed copies are uncontrolled, please refer to website for latest information www.colson-castors.co.uk

20/04/2015 Issue 1