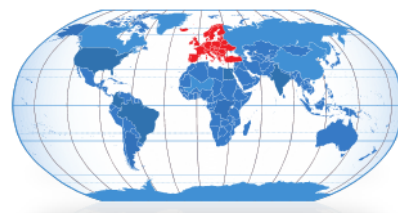


Product Information



EH210SUTM

EH Series Extra Heavy Duty Swivel Castor

Cast Iron top and steel fabricated forks with Taper Roller bearings for swivel.

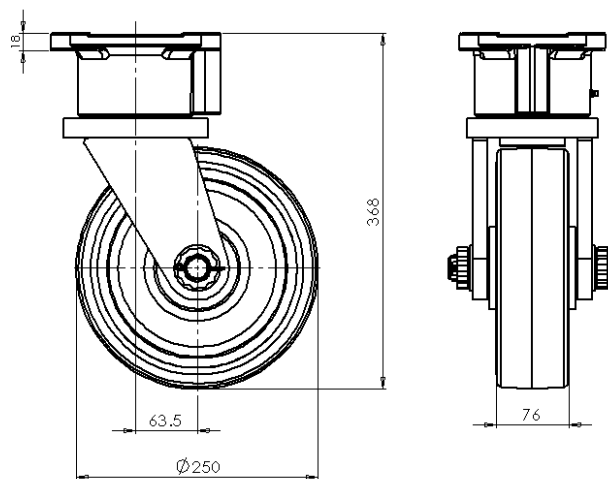
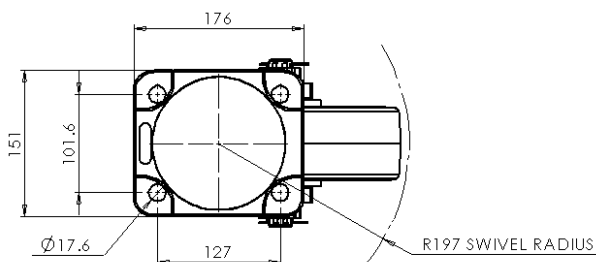
Wheel centre Cast Iron with Taper Roller bearings.
Tread Polyurethane.

Fixing by four M16 bolts



Technical Data

Wheel diameter	250mm
Wheel tread width	76mm
Swivel radius	197mm
Offset	63.5mm
Body - colour	Black
Wheel & Tread— colour	Red
Load capacity	2270kg Max
Standard	



THE GLOBAL LEADER IN CASTORS AND WHEELS

Printed copies are uncontrolled, please refer to website for latest information www.colson-castors.co.uk

20/04/2015 Issue 1