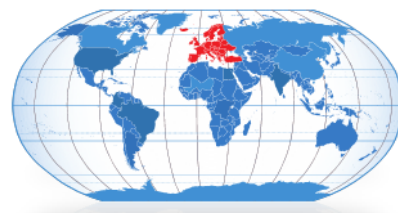


Product Information



522NSBK647

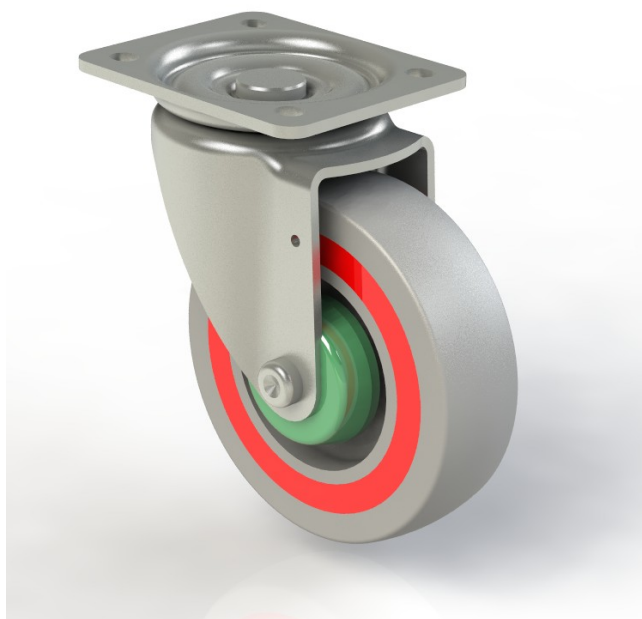
125mm Ball Bearing Swivel Castor

Pressed Steel Zinc Plated Fork

Pressed Steel zinc Plated top plate with double ball bearing swivel

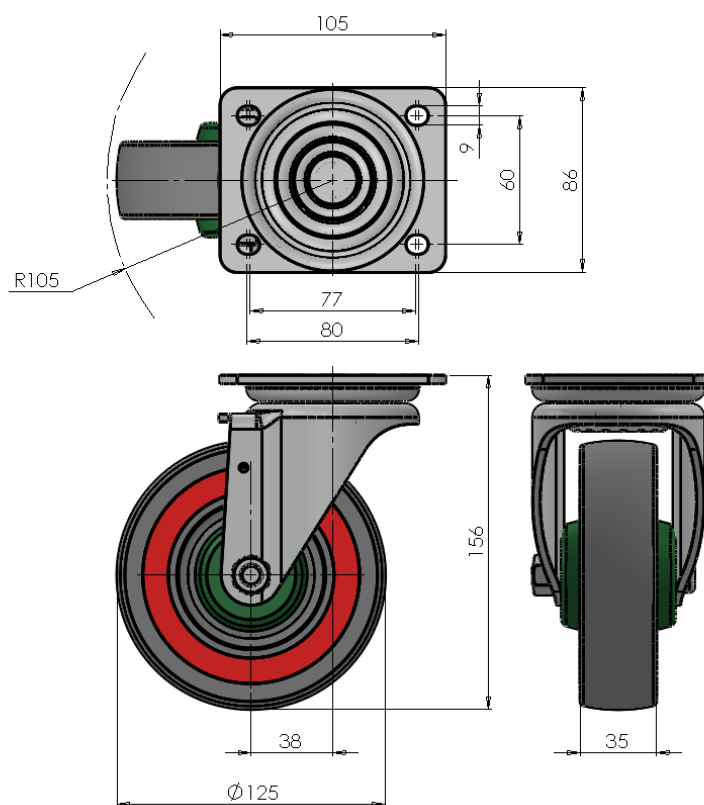
Composite Polyolefin wheel with internal TPR tyre, fitted with a Roller bearing.

Fixing: Four M8 bolts



Technical Data

Wheel diameter	125mm
Wheel tread width	35mm
Hub width	47.5mm
Swivel radius	105mm
Offset	38mm
Body - colour	Zinc Plated
Wheel — colour	Grey/Red
Load capacity (dynamic)	200Kg
Standard	ISO 22883



THE GLOBAL LEADER IN CASTORS AND WHEELS

Printed copies are uncontrolled, please refer to website for latest information www.colson-castors.co.uk

20/04/2015 Issue 1