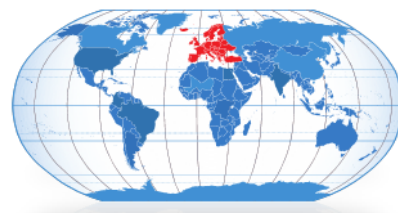


# Product Information



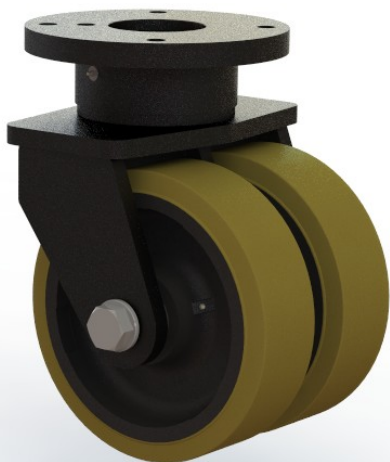
**2SZ400PT3Z**

## 400mm Heavy Duty twin wheel castor.

Kingpinless swivel bearing with two large diameter hardened ball bearing raceways.

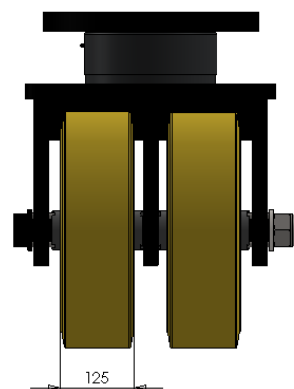
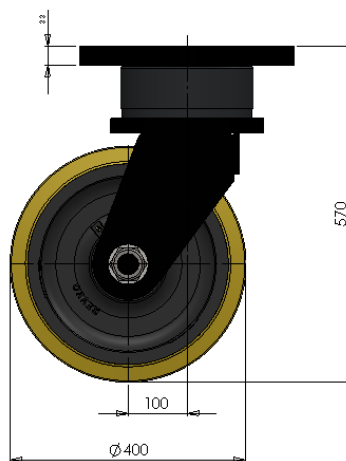
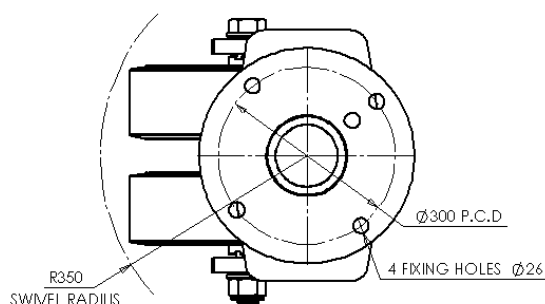
Twin wheels, Cast Iron centres with 'Vulkollan' Polyurethane tyre and taper Roller bearings.

Fixings:- Four M24 bolts



### Technical Data

Wheel diameter	400mm
Wheel tread width	125mm
Hub width	N/A
Swivel radius	350mm
Offset	100mm
Body - colour	Grey
Wheel — colour	Grey
Tyre - colour	Yellow
Load capacity (dynamic)	11400kg
Standard	



**THE GLOBAL LEADER IN CASTORS AND WHEELS**

Printed copies are uncontrolled, please refer to website for latest information [www.colson-castors.co.uk](http://www.colson-castors.co.uk)

20/04/2015 Issue 1